



**WOMEN'S RUNNING**  
**2021**



# WOMEN'S RUNNING 2021

*DIGITAL* 2

*CUSTOM* 10

*STOCK* 14

*FOOTWEAR* 24

*EQUIPMENT* 27

*DIGITAL OPTIONS* 29

*COLOR CHART* 30






# MOVE TO ZERO



## Helping Protect The Future Of Sport For All Athletes\*

Move to Zero is Nike's journey toward zero carbon and zero waste to help protect the future of sport. We exist to serve athletes everywhere and that's why we're on a mission to help ensure a healthy planet. For us, there is no finish line.

NikeTeam.com will now display a sunburst logo next to products made with sustainable materials.

Look for this logo  Sustainable Materials to find products made with at least 50% sustainable materials by weight, exclusive of trims. Sustainable materials include recycled polyester or organic cotton.

Recycled polyester reduces carbon emissions and waste.

Organic cotton is grown without synthetic fertilizers and with less water than conventional cotton.

**RUNNING**

**NEW NIKE DIGITAL ELITE FAST SINGLET**  
 CV3599 \$65.00

 Sustainable Materials

**SIZES:** XS, S, M, L, XL, 2XL \*10% upcharge for 3XL, ST, MT, LT, AXL, 2KLT, 3KLT

**FABRIC:** 100% recycled polyester.

**OFFER DATE:** 01/01/21 **END DATE:** 01/01/24

Designed for the fastest runners in the world, the Nike Digital Elite Fast Singlet gives you an almost weightless feel with sweat-wicking power and laser-perforated fabric for breathability. It features an athletic cut to help keep you cool and comfortable during competition or training. Body width: 17.25", Body length: 24" (size medium), Tall body length: +1.25" (all sizes).



 **CUSTOMIZE IT**  
 For complete embellishment and pricing options please visit [NIKETEAM.COM](https://www.nike.com/NIKETEAM)



For more information on Nike Sustainability please visit [nike.com/sustainability](https://www.nike.com/sustainability) or [purpose.nike.com](https://www.purpose.nike.com).

**NEW NIKE DIGITAL ELITE FAST SINGLET**  
**CV3599 \$65.00**

**SIZES:** XS, S, M, L, XL, 2XL \*15% upcharge for 3XL, ST, MT, LT, XLT, 2XLT, 3XLT  
**FABRIC:** 100% recycled polyester.  
**OFFER DATE:** 01/01/21 **END DATE:** 01/01/24

Designed for the fastest runners in the world, the Nike Digital Elite Fast Singlet gives you an almost-weightless feel with sweat-wicking power and laser-perforated fabric for breathability. It features an athletic cut to help keep you cool and comfortable during competition or training. Body width: 17.5", Body length: 24" (size medium). Tall body length: +1.25" (all sizes).



**CUSTOMIZE IT**  
For complete embellishment and pricing options please visit [NIKETEAM.COM](https://www.niketeam.com)



**NEW NIKE DIGITAL ELITE FAST SHORT**  
**CV3444 \$65.00**

**SIZES:** XS, S, M, L, XL, 2XL \*15% upcharge for 3XL  
**FABRIC:** Body: 100% polyester. Liner: 92% recycled polyester.  
**OFFER DATE:** 01/01/21 **END DATE:** 01/01/24

Designed to give elite athletes ultimate breathability, the Nike Digital Elite Fast Shorts feature a lightweight design with a ventilated waistband. The shorter inseam and split-leg side vents let you move freely, while a sweat-wicking liner ensures a comfortable fit. Hip width: 21.25" (size medium), Inseam length: 1.75" (all sizes).



**CUSTOMIZE IT**  
For complete embellishment and pricing options please visit [NIKETEAM.COM](https://www.niketeam.com)



**NIKE DIGITAL RACE DAY ELITE SINGLET**  
835974 \$65.00\*



**SIZES:** XS, S, M, L, XL, 2XL \*15% upcharge for 3XL, ST, MT, LT, XLT, 2XLT, 3XLT  
100% recycled polyester.

**FABRIC:**

**OFFER DATE:** 01/01/17 **END DATE:** 01/01/21

Fully sublimated Olympic inspired ultra lightweight flat back mesh singlet. No stitch bonded seams and neckline for zero distraction and comfort. Featuring an improved neck line for increased comfort and ultimate performance for the athlete. Back panel with laser cut perforated flow motion pattern for optimized airflow and breathability. Tailored Olympic fit designed for use of the recreational runner to the elite athletes for training or competition. Ability to customize team color and logo with Olympic graphic and able to customize Swoosh design trademark color. Body width: 17.5", Body length: 23" (size medium). Tall body length: +2.375" (all sizes).



FLOW MOTION OPTION



FILTER OPTION



FLUID FORCE OPTION



SHATTERED STRIPES OPTION

**NIKE DIGITAL RACE DAY ELITE SHORT**  
835973 \$65.00\*

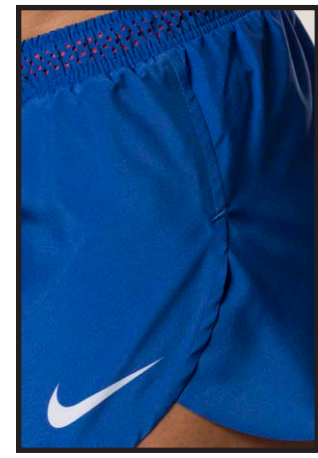
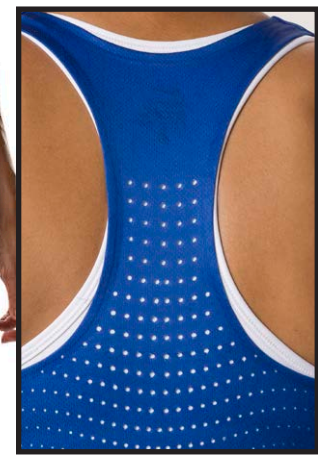


**SIZES:** XS, S, M, L, XL, 2XL \*15% upcharge for 3XL **FABRIC:** Shell: 100% polyester. Liner: 92% polyester/8% spandex.

**Liner:** 92%

**OFFER DATE:** 01/01/17 **END DATE:** 01/01/21

Fully sublimated ultra lightweight split leg short. 70 gram fabric and bonded hem for zero distraction and increased mobility. Laser cut perforated waistband with drawcord for enhanced ventilation and color pop. Dri-FIT built-in liner for comfort and adjustability. Designed for use of the recreational runner to the elite athletes for training or competition. Ability to customize team color and logo with graphic and able to customize Swoosh design trademark color. Hip width: 22" (size medium), Inseam length: 1.5" (all sizes).



**NIKE DIGITAL RACE DAY SINGLET**  
835984 \$45.00



**SIZES:** XS, S, M, L, XL, 2XL \*15% upcharge for 3XL, ST, MT, LT, XLT, 2XLT, 3XLT  
**FABRIC:** Body: 100% recycled polyester. 100% polyester mesh.  
**OFFER DATE:** 01/01/17 **END DATE:** 01/01/21

Fully sublimated lightweight flat back mesh singlet with warp knit mesh back to keep the body cool and for breathability. Featuring an improved neck line for increased comfort and ultimate performance for the athlete. Minimal seams for athletes to move freely with zero distraction and mobility. Designed for use of the recreational runner to the elite athletes for training or competition. Ability to customize team color and logo and able to customize Swoosh design trademark color. Body width: 17.5", Body length: 23" (size medium). Tall body length: +2.375" (all sizes).



MASCOT PRINT OPTIONS



TIGER CHECKERS WINGS WARRIOR

**NIKE DIGITAL RACE DAY SHORT**  
835983 \$50.00



**SIZES:** XS, S, M, L, XL, 2XL \*15% upcharge for 3XL  
**FABRIC:** Shell: 100% polyester. Liner: 92% polyester/8% spandex.  
**OFFER DATE:** 01/01/17 **END DATE:** 01/01/21

Fully sublimated ultra lightweight split leg short. Dri-FIT built-in liner, elastic waistband and internal drawcord for comfort and adjustability. 70 gram fabric allows for zero distraction and increased mobility. Designed for use of the recreational runner to the elite athletes for training or competition. Ability to customize team color and logo and able to customize Swoosh design trademark color. Hip width: 22" (size medium), Inseam length: 1.5" (all sizes).



BACK DETAIL

**NEW NIKE DIGITAL FAST UNITARD**  
**CV3665 \$65.00**

**SIZES:** XS, S, M, L, XL, 2XL, 3XL

**FABRIC:** 89% recycled polyester/11% spandex.

**OFFER DATE:** 01/01/21 **END DATE:** 01/01/24

The Nike Digital Fast Unitard features sweat-wicking technology that helps you stay dry and comfortable, while its body-hugging design gives you the freedom to move with reduced distractions.

Body width: 16.25", Inseam length: 7" (size medium).



Sustainable Materials



**CUSTOMIZE IT**

For complete embellishment and pricing options please visit [NIKETEAM.COM](https://www.niketeam.com)



# NIKE DIGITAL RACE DAY UNITARD

835985 \$65.00



**SIZES:** XS, S, M, L, XL, 2XL \*15% upcharge for 3XL **FABRIC:** 89% polyester/11% spandex.  
**OFFER DATE:** 01/01/17 **END DATE:** 01/01/21

Spandex unitard that wicks sweat for dry/cool comfort. Body led design, all seams were placed to allow athletes to move freely with zero distraction and mobility. Designed for use of the recreational runner to the elite athletes for training or competition. Bottom is piece dyed for modesty while the top is completely sublimated. Ability to customize team color and logo with Olympic graphic and able to customize Swoosh design trademark color. Body width: 15.25", Inseam length: 3.75" (size medium).



### MASCOT PRINT OPTIONS





**NEW NIKE DIGITAL FAST AIRBORNE TOP**  
**CV3647 \$55.00**

**SIZES:** XS, S, M, L, XL, 2XL \*15% upcharge for 3XL, ST, MT, LT, XLT, 2XLT, 3XLT  
**FABRIC:** 89% recycled polyester/11% spandex.  
**OFFER DATE:** 01/01/21 **END DATE:** 01/01/24

Feel your absolute fastest in the Nike Digital Fast Airborne Top. It features cool-to-the-touch spandex and sweat-wicking technology for when your run heats up. High-stretch fabric lets you move freely. Body width: 16.25", Body length: 21.25" (size medium). Tall body length: +1.25" (all sizes).



 **CUSTOMIZE IT**  
For complete embellishment and pricing options please visit [NIKETEAM.COM](https://www.niketeam.com)

**NEW NIKE DIGITAL FAST ARM SLEEVES**  
**CW6826 \$30.00**

**SIZES:** XS, S, M, L, XL  
**FABRIC:** 84% recycled polyester/16% spandex.  
**OFFER DATE:** 01/01/21 **END DATE:** 01/01/24

The Nike Digital Fast Arm Sleeves are designed to move with you while wicking sweat away from your body—for a little extra coverage that won't slow you down.



 **CUSTOMIZE IT**  
For complete embellishment and pricing options please visit [NIKETEAM.COM](https://www.niketeam.com)

# NIKE DIGITAL RACE DAY TIGHT TANK

835981 \$55.00



**SIZES:** XS, S, M, L, XL, 2XL \*15% upcharge for 3XL, ST, MT, LT, XLT, 2XLT, 3XLT  
**FABRIC:** 89% polyester /11% spandex.  
**OFFER DATE:** 01/01/17 **END DATE:** 01/01/21

Fully sublimated spandex performance top that wicks sweat for dry/cool comfort. Fitted body led design, all seams were placed to allow athletes to move freely with zero distraction and mobility. Designed for use of the recreational runner to the elite athletes for training or competition. Ability to customize team color and logo with Olympic graphic and able to customize Swoosh design trademark color. Body width: 16", Body length: 21" (size medium). Tall body length: +2.375" (all sizes).



FLOW MOTION OPTION



FILTER OPTION



FLUID FORCE OPTION



SHATTERED STRIPES OPTION

### MASCOT PRINT OPTIONS



SOLID



TIGER



CHECKERS



WINGS



WARRIOR



Style 835982  
NIKE CUSTOM  
RACE DAY  
TIGHT HALF  
(pg 10)

**NEW NIKE DIGITAL FAST SINGLET**  
**CV3620 \$45.00**

**SIZES:** XS, S, M, L, XL, 2XL \*15% upcharge for 3XL, ST, MT, LT, XLT, 2XLT, 3XLT  
**FABRIC:** 100% recycled polyester.  
**OFFER DATE:** 01/01/21 **END DATE:** 01/01/24

The Nike Digital Fast Singlet is crafted from lightweight and highly breathable fabric that actively wicks sweat away from your body. The updated neckline design provides a smooth feeling against your skin that won't get in the way on race day or long training runs. Body width: 17.5", Body length: 24" (size medium). Tall body length: +1.25" (all sizes).



**CUSTOMIZE IT**  
For complete embellishment and pricing options please visit [NIKETEAM.COM](https://www.niketeam.com)



**NEW NIKE DIGITAL FAST SHORT**  
**CV3606 \$50.00**

**SIZES:** S, M, L, XL, 2XL, 3XL  
**FABRIC:** Body: 100% polyester. Liner: 92% recycled polyester.  
**OFFER DATE:** 01/01/21 **END DATE:** 01/01/24

Maintain your pace in the Nike Digital Fast Shorts, featuring ultralightweight, breathable fabric. Shorter inseam and deep side splits gives you ultimate freedom to move, while a sweat-wicking liner ensures a comfortable fit. Hip width: 21.25" (size medium), Inseam length: 1.75" (all sizes).



**CUSTOMIZE IT**  
For complete embellishment and pricing options please visit [NIKETEAM.COM](https://www.niketeam.com)



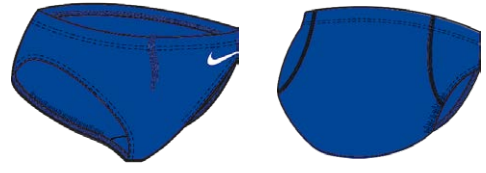
### NIKE CUSTOM RACE DAY BRIEF 849589 \$35.00



**SIZES:** XXS, XS, S, M, L, XL, 2XL \*15% upcharge for 3XL **FABRIC:** Shell: 89% polyester/11% spandex. Liner: 92% polyester/8% spandex.

**OFFER DATE:** 01/01/17 **END DATE:** 01/01/21

Dri-FIT spandex brief that wicks sweat for dry/cool comfort. Body led design, all seams were placed to allow athletes to move freely with zero distraction and mobility. Designed for use of the recreational runner to the elite athletes for training or competition. Ability to customize swoosh color. Hip width: 15.25" (size medium).



### NIKE CUSTOM RACE DAY BOY SHORT 889701 \$35.00



**SIZES:** XXS, XS, S, M, L, XL, 2XL \*15% upcharge for 3XL **FABRIC:** 89% polyester/11% spandex.

**OFFER DATE:** 01/01/17 **END DATE:** 01/01/21

Dri-FIT spandex boy short that wicks sweat for dry/cool comfort. Body led design, all seams were placed to allow athletes to move freely with zero distraction and mobility. Updated exposed waistband for comfort, support and locked-in feel. Designed for use of the recreational runner to the elite athletes for training or competition. Ability to add custom logo to lower right leg and customize Swoosh design trademark color. Hip width: 15.5" (size medium), Inseam length: 3" (all sizes).



### NIKE CUSTOM RACE DAY TIGHT HALF 835982 \$45.00



**SIZES:** XS, S, M, L, XL, 2XL \*15% upcharge for 3XL **FABRIC:** 89% polyester/11% spandex.

**OFFER DATE:** 01/01/17 **END DATE:** 01/01/21

Dri-FIT spandex half tight that wicks sweat for dry/cool comfort. Body led design, all seams were placed to allow athletes to move freely with zero distraction and mobility. Updated exposed waistband for comfort, support and locked-in feel. Designed for use of the recreational runner to the elite athletes for training or competition. Ability to add custom logo to lower right leg and customize Swoosh design trademark color. Hip width: 15.5" (size medium), Inseam length: 6.5" (all sizes).



Style 835981  
NIKE DIGITAL RACE DAY TIGHT TANK  
(pg 8)



**NEW NIKE CUSTOM FAST FL TIGHT**  
**CV3668 \$65.00**

**SIZES:** XS, S, M, L, XL, 2XL  
**FABRIC:** 89% recycled polyester/11% spandex.  
**OFFER DATE:** 01/01/21 **END DATE:** 01/01/24

Never slow down in the race-ready Nike Custom Fast Full Length Tights. Made from stretchy spandex fabric that moves with you while locking you in, they feature sweat-wicking technology to help keep you cool when the pace heats up. Updated elastic drawcord waistband gives you a more comfortable feel while still providing plenty of support. Zippered ankles make the tights easy to put on and take off. Hip width: 15.75", Inseam length: 27" (size medium).

 **CUSTOMIZE IT**  
For complete embellishment and pricing options please visit [NIKETEAM.COM](https://www.niketeam.com)



**NEW NIKE CUSTOM FAST HALF TIGHT**  
**CV3176 \$45.00**

**SIZES:** XS, S, M, L, XL, 2XL \*15% upcharge for 3XL  
**FABRIC:** 89% recycled polyester/11% spandex.  
**OFFER DATE:** 01/01/21 **END DATE:** 01/01/24

Never slow down in the race-ready Nike Custom Fast Half Tights. Made from stretchy spandex fabric that moves with you while locking you in, they feature sweat-wicking technology to help keep you cool when the pace heats up. Updated elastic drawcord waistband gives you a more comfortable feel while still providing plenty of support. Hip width: 15.75", Inseam length: 7" (size medium).

 **CUSTOMIZE IT**  
For complete embellishment and pricing options please visit [NIKETEAM.COM](https://www.niketeam.com)

 Sustainable Materials



**NEW NIKE CUSTOM FAST BRIEF**  
**CV3168 \$35.00**

**SIZES:** XXS, XS, S, M, L, XL, 2XL \*15% upcharge for 3XL  
**FABRIC:** 89% recycled polyester/11% spandex.  
**OFFER DATE:** 01/01/21 **END DATE:** 01/01/24

Never slow down in the Nike Custom Fast Briefs. Cut for coverage and speed, they feature sweat-wicking fabric to help keep you cool when the pace heats up. Drawcord waistband. Hip width: 15.25" (size medium).



**CUSTOMIZE IT**  
For complete embellishment and pricing options please visit [NIKETEAM.COM](https://www.niketeam.com)

**NEW NIKE CUSTOM FAST BOY SHORT**  
**CV3094 \$35.00**

**SIZES:** XXS, XS, S, M, L, XL, 2XL \*15% upcharge for 3XL  
**FABRIC:** 89% recycled polyester/11% spandex.  
**OFFER DATE:** 01/01/21 **END DATE:** 01/01/24

Never slow down in the Nike Custom Fast Boy Shorts. Cut with a bodyhugging fit for optimal speed, they feature sweat-wicking stretch fabric to help keep you cool when the pace heats up. Drawcord waistband. Hip width: 15.5" (size medium), Inseam length: 3" (all sizes).



**CUSTOMIZE IT**  
For complete embellishment and pricing options please visit [NIKETEAM.COM](https://www.niketeam.com)

# CUSTOM OPTIONS



# CUSTOMIZE IT

FOR COMPLETE EMBELLISHMENT AND PRICING OPTIONS PLEASE VISIT [NIKETEAM.COM](http://NIKETEAM.COM)

## COLOR OPTIONS



## EMBELLISHMENT COLOR OPTIONS



## EMBELLISHMENT COLOR OPTIONS FOR SUBLIMATED LIGHTWEIGHT STRETCH TWILL AND EMBROIDERY ONLY.



## LETTERING OPTIONS: HEIGHT WILL VARY BASED ON TEAM NAME.

### NEW VAPOR STRIKE - 1 or 2 color

ABCDEFGHIJKLMNOPQRSTUVWXYZ

### NEW VAPOR STRIKE ITALIC - 1 or 2 color

ABCDEFGHIJKLMNOPQRSTUVWXYZ

### ORANGE - 1 or 2 color

ABCDEFGHIJKLMNOPQRSTUVWXYZ

### ALL LEAGUE - 1 or 2 color - (Also available in Condensed version)

ABCDEFGHIJKLMNOPQRSTUVWXYZ

### NIKE UNCONTESTED - 1 or 2 color

ABCDEFGHIJKLMNOPQRSTUVWXYZ

### FULL BLOCK - 1 or 2 color - (Also available in Condensed version)

ABCDEFGHIJKLMNOPQRSTUVWXYZ

### BUREAU - 1 or 2 color

ABCDEFGHIJKLMNOPQRSTUVWXYZ

### BOULDER - 1 or 2 color

ABCDEFGHIJKLMNOPQRSTUVWXYZ

### MICHIGAN STATE - 1 or 2 color

ABCDEFGHIJKLMNOPQRSTUVWXYZ

### TUSCON - 1 or 2 color - (Also available in Condensed version)

ABCDEFGHIJKLMNOPQRSTUVWXYZ

### UPDATED SCRIPT - 1 or 2 color

ABCDEFGHIJKLMNOPQRSTUVWXYZ

### UPDATED SCRIPT LOWER CASE - 1 or 2 color

abcdefghijklmnopqrstuvwxyz

## NUMBERING OPTIONS: HEIGHT WILL VARY BY STYLE.

### NEW VAPOR STRIKE - 1 or 2 color

1234567890

### NEW VAPOR STRIKE ITALIC - 1 or 2 color

1234567890

### FULL BLOCK - 1 or 2 color - (Also available in Condensed version)

1234567890

### ALL LEAGUE - 1 or 2 color - (Also available in Bold and Condensed version)

1234567890

### ALL LEAGUE SHADOW - 2 color

1234567890

### ALL LEAGUE - 3 color

1234567890

### ORANGE - 1 or 2 color

1234567890

### NIKE UNCONTESTED - 1 or 2 color

1234567890

### BUREAU - 1 or 2 color

1234567890

### BOULDER - 3 color only

1234567890

### MICHIGAN STATE - 1 or 2 color

1234567890

### TUSCON - 1 or 2 color - (Also available in Condensed version)

1234567890

**NEW NIKE TEAM STOCK AIRBORNE TOP**  
**CV2733 \$50.00**

**SIZES:** XS, S, M, L, XL, 2XL  
**FABRIC:** Body: 92% polyester/8% spandex. Liner: 100% recycled polyester.  
**OFFER DATE:** 01/01/21 **END DATE:** 01/01/24  
 Featuring stretchy, sweat-wicking fabric and a built-in bra for running support, the Nike Team Stock Airborne Top is sculpted to give elite athletes the fastest feel possible while racing or training. Body width: 16.25", Body length: 21.25" (size medium).  
**Part of Stock Embellishment Program.**

- |                            |                           |                              |
|----------------------------|---------------------------|------------------------------|
| 012 Black/White/(White)    | 100 White/White/(Black)   | 342 Dark Green/White/(White) |
| 420 Navy/White/(White)     | 494 Royal/White/(White)   | 546 Purple/White/(White)     |
| 612 Cardinal/White/(White) | 658 Scarlet/White/(White) |                              |



BACK VIEW

**NEW NIKE TEAM STOCK FL TIGHT**  
**CV2730 \$60.00**

**SIZES:** XS, S, M, L, XL, 2XL  
**FABRIC:** 92% recycled polyester/8% spandex.  
**OFFER DATE:** 01/01/21 **END DATE:** 01/01/24  
 Keep up your pace in any conditions with the Nike Team Stock Full Length Tights. Their stretch fabric moves with you, while sweat-wicking technology helps keep you dry and comfortable when the run heats up. Zippered ankles make the tights easy to put on and take off. Hip width: 15.75", Inseam length: 27" (size medium).

- |                     |                        |                      |
|---------------------|------------------------|----------------------|
| 010 Black/(White)   | 341 Dark Green/(White) | 419 Navy/(White)     |
| 493 Royal/(White)   | 545 Purple/(White)     | 610 Cardinal/(White) |
| 657 Scarlet/(White) |                        |                      |





**NEW NIKE STOCK HALF TIGHT**  
**CV2741 \$40.00**

**SIZES:** XS, S, M, L, XL, 2XL  
**FABRIC:** 92% recycled polyester/8% spandex.  
**OFFER DATE:** 01/01/21 **END DATE:** 01/01/24

Never slow down in the Nike Stock Half Tights. They're crafted with sweat-wicking fabric that locks you in for a comfortable fit, but flexes with your every movement for reduced distractions. Updated drawcord waistband gives you a more comfortable feel while providing a custom fit. Hip width: 15.75", Inseam length: 7" (size medium).

---

<b>010</b> Black/(White)	<b>341</b> Dark Green/(White)	<b>419</b> Navy/(White)
<b>493</b> Royal/(White)	<b>545</b> Purple/(White)	<b>610</b> Cardinal/(White)
<b>657</b> Scarlet/(White)		



**NIKE POWER STOCK RACE DAY HALF TIGHT**  
**835966 \$40.00**

**SIZES:** XS, S, M, L, XL, 2XL **FABRIC:** 92% polyester/8% spandex.  
**OFFER DATE:** 01/01/17 **END DATE:** 01/01/21

Dri-FIT spandex half tight that wicks sweat for dry/cool comfort. Body led design, all seams were placed to allow athletes to move freely with zero distraction and mobility. Updated exposed waistband for comfort, support and locked-in feel with elevated internal Nike embossed branding. Designed for use of the recreational runner to the elite athletes for training or competition. Hip width: 15.5" (size medium), Inseam length: 6.5" (all sizes).

---

<b>010</b> Black/(White)	<b>341</b> Dark Green/(White)	<b>419</b> Navy/(White)
<b>493</b> Royal/(White)	<b>545</b> Purple/(White)	<b>610</b> Cardinal/(White)
<b>657</b> Scarlet/(White)		



**NEW NIKE TEAM STOCK BOY SHORT**  
**CV2729 \$30.00**



**SIZES:** 2XS, XS, S, M, L, XL, 2XL  
**FABRIC:** 92% recycled polyester/8% spandex.  
**OFFER DATE:** 01/01/21 **END DATE:** 01/01/24

Never slow down in the Nike Team Stock Boy Shorts. They're crafted with sweat-wicking fabric that locks you in for a comfortable fit, but flexes with your every movement for reduced distractions. Updated drawcord waistband gives you a more comfortable feel while providing a custom fit. Hip width: 15.5" (size large), Inseam length: 3" (all sizes).

010 Black/(White)	341 Dark Green/(White)	419 Navy/(White)
493 Royal/(White)	545 Purple/(White)	610 Cardinal/(White)
657 Scarlet/(White)	669 Dark Maroon/(White)	



**NIKE POWER STOCK RACE DAY BOY SHORT**  
**835964 \$30.00**

**SIZES:** XXS, XS, S, M, L, XL, 2XL **FABRIC:** 92% polyester/8% spandex.  
**OFFER DATE:** 01/01/17 **END DATE:** 01/01/21

Dri-FIT spandex boy short that wicks sweat for dry/cool comfort. Body led design, all seams were placed to allow athletes to move freely with zero distraction and mobility. Updated exposed waistband for comfort, support and locked-in feel with elevated internal Nike embossed branding. Designed for use of the recreational runner to the elite athletes for training or competition. Hip width: 15.5" (size medium), Inseam length: 3" (all sizes).

010 Black/(White)	341 Dark Green/(White)	419 Navy/(White)
493 Royal/(White)	545 Purple/(White)	610 Cardinal/(White)
657 Scarlet/(White)	669 Dark Maroon/(White)	



**NIKE POWER STOCK RACE DAY TIGHT TANK**  
**835963 \$50.00**

**SIZES:** XS, S, M, L, XL, 2XL **FABRIC:** 92% polyester/8% spandex.  
**OFFER DATE:** 01/01/17 **END DATE:** 01/01/21

Dri-FIT spandex performance top that wicks sweat for dry/cool comfort. Fitted body led design, all seams were placed to allow athletes to move freely with zero distraction and mobility. Built in bra for additional support. Contrast self fabric power speed inset design aesthetic for elevated race day look. Designed for use of the recreational runner to the elite athletes for training or competition. Body width: 16", Body length: 20.75" (size medium).

**Part of Stock Embellishment Program.**

- |                            |                           |                              |
|----------------------------|---------------------------|------------------------------|
| 012 Black/White/(White)    | 100 White/White/(Black)   | 342 Dark Green/White/(White) |
| 420 Navy/White/(White)     | 494 Royal/White/(White)   | 546 Purple/White/(White)     |
| 612 Cardinal/White/(White) | 658 Scarlet/White/(White) |                              |

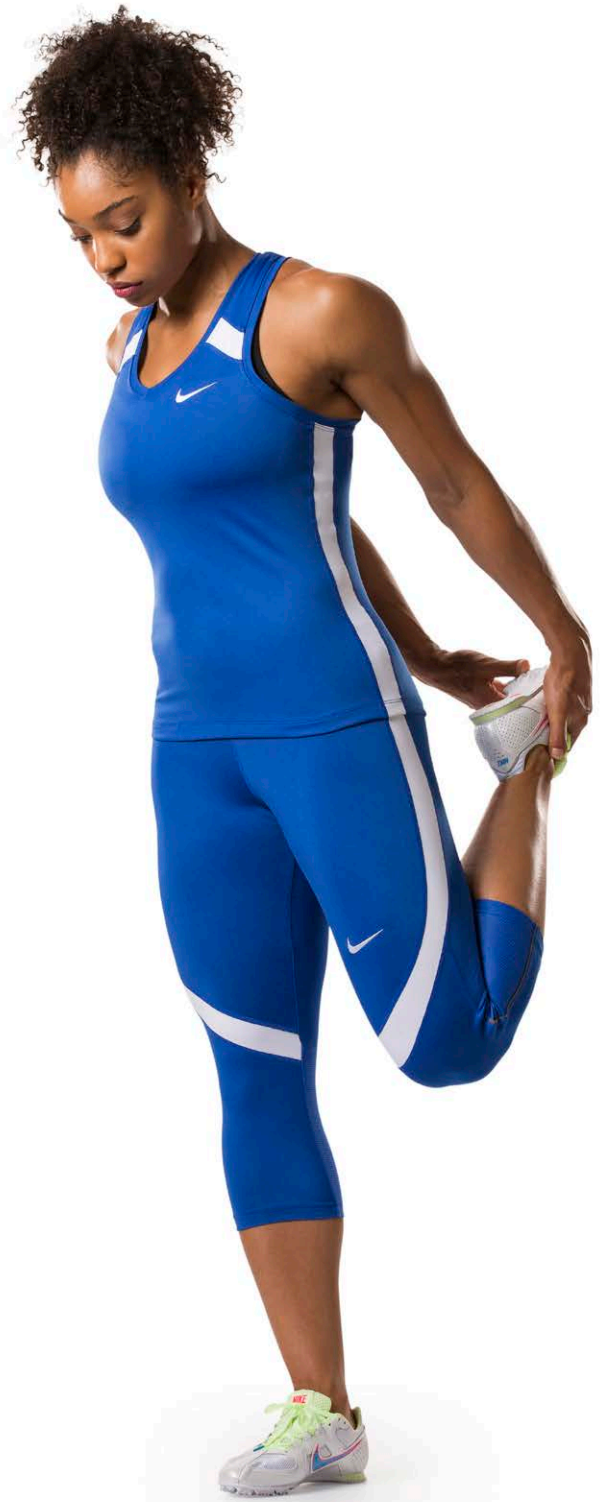


**NIKE POWER STOCK RACE DAY CAPRI**  
**835965 \$55.00**

**SIZES:** XS, S, M, L, XL, 2XL **FABRIC:** 92% polyester/8% spandex.  
**OFFER DATE:** 01/01/17 **END DATE:** 01/01/21

Dri-FIT spandex 3/4 tight that wicks sweat for dry/cool comfort. Body led design, all seams were placed to allow athletes to move freely with zero distraction and mobility. Updated waistband with drawcord for comfort, support and locked-in feel. Reflectivity for sleek design and low light visibility. Lower back leg mesh for ventilation. Contrast self fabric inset power speed design on side leg for elevated race day look. Designed for use of the recreational runner to the elite athletes for training or competition. Hip width: 15.25", Inseam length: 17.75" (size medium).

- |                            |                           |                              |
|----------------------------|---------------------------|------------------------------|
| 010 Black/Black/(White)    | 012 Black/White/(White)   | 342 Dark Green/White/(White) |
| 420 Navy/White/(White)     | 494 Royal/White/(White)   | 546 Purple/White/(White)     |
| 612 Cardinal/White/(White) | 658 Scarlet/White/(White) |                              |



**NEW NIKE STOCK DRY MILER SINGLET  
CV2804 \$35.00**

**SIZES:** XS, S, M, L, XL, 2XL  
**FABRIC:** 100% polyester.  
**OFFER DATE:** 01/01/21 **END DATE:** 01/01/24

The Nike Stock Dry Miler Singlet helps keep you cool and comfortable while racing or training, thanks to its sweat-wicking fabric. Side vents let you move freely. Dropped back hem helps keep you covered as you move. Body width: 17.5", Body length: 24" (size medium).

**Part of Stock Embellishment Program.**

012 Black/White/(White)	100 White/White/(Black)	342 Dark Green/White/(White)
420 Navy/White/(White)	494 Royal/White/(White)	546 Purple/White/(White)
612 Cardinal/White/(White)	658 Scarlet/White/(White)	670 Dark Maroon/White/(White)

**YOUTH / CV2795 / XS-XL / \$30.00 / Body width: 15.25", Body length: 20.75" (size medium)**



**NIKE DRY TANK**  
835962 \$35.00

**SIZES:** XS, S, M, L, XL, 2XL **FABRIC:** 100% polyester.  
**OFFER DATE:** 01/01/17 **END DATE:** 01/01/21

Dri-FIT lightweight fabric enables thermoregulation and sweat management. Flat seams for zero distractions mesh insets for enhanced breathability recreational runner to elite athlete. Regular fit. Soft hand feel. Body width: 17", Body length: 23" (size medium).

**Part of Stock Embellishment Program.**

- |                            |                           |                               |
|----------------------------|---------------------------|-------------------------------|
| 012 Black/White/(White)    | 100 White/White/(Black)   | 342 Dark Green/White/(White)  |
| 420 Navy/White/(White)     | 494 Royal/White/(White)   | 546 Purple/White/(White)      |
| 612 Cardinal/White/(White) | 658 Scarlet/White/(White) | 670 Dark Maroon/White/(White) |

**YOUTH / 836318 / S-XL / \$30.00 / Body width: 13.75", Body length: 19.75" (size medium)**



**NIKE DRY TEMPO SHORT**  
849585 \$30.00

**SIZES:** XS, S, M, L, XL, 2XL **FABRIC:** Body: 100% polyester. Liner: 100% recycled polyester.  
**OFFER DATE:** 01/01/17 **END DATE:** 01/01/22

Lightweight woven body with mesh side panel, Dri-FIT liner and drop in pocket at waist. Body fabric is recycled fabrication. Recreational runner to elite athlete. Hip width: 21.75" (size medium), Inseam length: 3" (all sizes).

- |                                 |                                  |                                    |
|---------------------------------|----------------------------------|------------------------------------|
| 012 Black/White/White/(White)   | 019 Black/Black/Black/(Black)*   | 342 Dark Green/White/White/(White) |
| 420 Navy/White/White/(White)    | 494 Royal/White/White/(White)    | 499 Royal/Royal/Black/(White)*     |
| 546 Purple/White/White/(White)  | 612 Cardinal/White/White/(White) | 655 Scarlet/Scarlet/Black/(White)* |
| 658 Scarlet/White/White/(White) |                                  |                                    |

\*Printed Binding

**YOUTH / 836317 / XS-XL / \$30.00 / Hip width: 17.5", Inseam length: 3.25" (size medium)**



**NIKE STOCK BREATHE RACE DAY SINGLET**  
**897022 \$30.00**

**SIZES:** XS, S, M, L, XL, 2XL **FABRIC:** 100% polyester.  
**OFFER DATE:** 01/01/18 **END DATE:** 01/01/22

Lightweight Dri-FIT mesh singlet to keep the body cool and for breathability. Featuring an improved neck line for increased comfort and ultimate performance for the athlete. Minimal seams for athletes to move freely with zero distraction and mobility. Designed for use of the recreational runner to the elite athletes for training or competition. Back mesh panel that wraps over shoulder always color blocked to white.  
 Body width: 17.5", Body length: 23" (size medium).

**Part of Stock Embellishment Program.**

- |                            |                           |                               |
|----------------------------|---------------------------|-------------------------------|
| 012 Black/White/(White)    | 100 White/White/(Black)   | 342 Dark Green/White/(White)  |
| 420 Navy/White/(White)     | 494 Royal/White/(White)   | 546 Purple/White/(White)      |
| 612 Cardinal/White/(White) | 658 Scarlet/White/(White) | 670 Dark Maroon/White/(White) |



BACK VIEW

**NIKE DRY SHORT CITY CORE**  
**897024 \$30.00**

**SIZES:** XS, S, M, L, XL, 2XL **FABRIC:** Shell: 100% recycled polyester. Liner: 100% polyester.  
**OFFER DATE:** 01/01/18 **END DATE:** 01/01/22

Dri-FIT lightweight woven short with side mesh insets in side panel always color blocked to white. Mesh side vent provides enhanced range of motion. Designed for use of the recreational runner to the elite athletes for training or competition. Hip width: 21.25" (size medium), Inseam length: 3" (all sizes).

- |                           |                               |                            |
|---------------------------|-------------------------------|----------------------------|
| 012 Black/White/(White)   | 342 Dark Green/White/(White)  | 420 Navy/White/(White)     |
| 494 Royal/White/(White)   | 546 Purple/White/(White)      | 612 Cardinal/White/(White) |
| 658 Scarlet/White/(White) | 670 Dark Maroon/White/(White) |                            |



**NIKE WOVEN JACKET**  
**AJ3657 \$140.00**

**SIZES:** XS, S, M, L, XL, 2XL, 3XL **FABRIC:** Body: 100% nylon. Pockets: 100% polyester.  
**OFFER DATE:** 01/01/19 **END DATE:** 01/01/21

The Nike Woven Jacket is built to withstand the elements with weather-resistant fabric. Nike HyperShield fabric blocks elements in the harshest weather. Its hooded design includes a built-in visor so you can stay focused on your run. Reflective tape along seams. Zippered pockets. Body width: 20.25", Body length: 26" (size medium).

- 
- |                 |                      |                      |
|-----------------|----------------------|----------------------|
| 010 Black/White | 060 Anthracite/White | 341 Dark Green/White |
| 419 Navy/White  | 657 Scarlet/White    |                      |



**NIKE WOVEN PANT**  
**AJ3645 \$115.00**

**SIZES:** XS, S, M, L, XL, 2XL, 3XL **FABRIC:** Body: 100% nylon.  
**OFFER DATE:** 01/01/19 **END DATE:** 01/01/21

The Nike Woven Pants features fabric that keeps the elements out while you run. Nike HyperShield fabric blocks elements in the harshest weather. Its elastic waistband and zippered hem offer customizable comfort for your run. Reflective tape along seams. Zippered pockets. Hip width: 22", Inseam length: 31.5" (size medium).

- 
- |                 |                      |                      |
|-----------------|----------------------|----------------------|
| 010 Black/White | 060 Anthracite/White | 341 Dark Green/White |
| 419 Navy/White  | 657 Scarlet/White    |                      |



**NIKE DRY ELEMENT TOP 1/2 ZIP**  
**897021 \$70.00**

**SIZES:** XS, S, M, L, XL, 2XL **FABRIC:** 88% polyester/12% spandex.

**OFFER DATE:** 01/01/18 **HEATHERED OFFER DATE:** 04/01/18 **END DATE:** 01/01/22

Consumers love this signature Dri-FIT half-zip which now features a new mesh back panel for increased breathability. Drop shoulder sleeve for an updated modern look. Improved collar with facing for stability. Dropped back hemline for coverage with overall relaxed body fit. Thumbhole construction ensures arm is not exposed when not using the thumbhole. Body width: 20.5", Body length: 25.5" (size medium).

- |                                |                                |                               |
|--------------------------------|--------------------------------|-------------------------------|
| 010 Black/(White)              | 011 Black/Heather/(White)      | 012 Wolf Grey/Heather/(Black) |
| 060 Anthracite/(White)         | 061 Anthracite/Heather/(White) | 341 Dark Green/(White)        |
| 342 Dark Green/Heather/(White) | 419 Navy/(White)               | 420 Navy/Heather/(White)      |
| 493 Royal/(White)              | 494 Royal/Heather/(White)      | 657 Scarlet/(White)           |
| 658 Scarlet/Heather/(White)    |                                |                               |



**NIKE DRY ELEMENT PANT**  
**AJ3662 \$80.00**

**SIZES:** XS, S, M, L, XL, 2XL, 3XL **FABRIC:** 88% polyester/12% spandex.

**OFFER DATE:** 01/01/19 **END DATE:** 01/01/22

Dri-FIT material. Design updates maintaining athlete favorite details and fit with taper leg. Brand new silhouette in the element material that the athlete loves. Wide, elastic waistband with an internal drawcord provides a secure and adjustable fit. Zippered side pockets. Zipper at leg hem. Hip width: 20.75", Inseam length: 27.25" (size medium).

- |                        |                               |                        |
|------------------------|-------------------------------|------------------------|
| 010 Black/(White)      | 012 Wolf Grey/Heather/(Black) | 060 Anthracite/(White) |
| 341 Dark Green/(White) | 419 Navy/(White)              | 493 Royal/(White)      |
| 657 Scarlet/(White)    |                               |                        |





# STOCK EMBELLISHMENT PROGRAM

## FULL BLOCK font only



### Embellishment Color Options:



### Women's Running - 1 or 2 color

STYLE NUMBER	STYLE NAME	CATALOG PAGE #	LETTER HEIGHT	NUMBER HEIGHT BACK	PRINT OPTIONS	
CV2733	NIKE TEAM STOCK AIRBORNE TOP	14	2"/2.5"	4"/6"	<b>WILDCATS</b> STRAIGHT	<b>WILDCATS</b> VERTICALLY ARCHED
835963	NIKE POWER STOCK RACE DAY TIGHT TANK	16	2"/2.5"	4"/6"		
CV2804	NIKE STOCK DRY MILER SINGLET	17	2"/2.5"	4"/6"		
CV2795	YOUTH NIKE STOCK DRY MILER SINGLET	17	2"/2.5"	4"/6"		
835962	NIKE DRY TANK	18	2"/2.5"	4"/6"	<b>10</b> 2 DIGIT NUMBER 6"	<b>100</b> 3 DIGIT NUMBER 4"
836318	YOUTH NIKE DRY TANK	18	2"/2.5"	4"/6"		
897022	NIKE STOCK BREATHE RACE DAY SINGLET	19	2"/2.5"	4"/6"		



**NIKE ZOOM SUPERFLY ELITE 2 FK**  
**CD4382 \$150.00**

**UNISEX SIZES:** 4-13, 14, 15, 16 **OFFER DATE:** 01/01/21

Elite level sprint spike for all distances from 100m - 400m, making the fastest in the world faster. **Weight: 5.4 oz. (Men's size 10)**

**UPPER:** Flyweave upper for perfect lockdown, offering a lightweight and breathable fit.

**OUTSOLE:** Generative design plate creates a 4x stiffness profile at half the weight of previous plates, creating maximum propulsion.

100 White/Flash Crimson-Hyper Jade-Hyper Violet



**NIKE ZOOM RIVAL S 9**  
**907564 \$65.00**

**UNISEX SIZES:** 4-13, 14, 15 **OFFER DATE:** 10/01/17-10/01/19

**Weight: 6.65 oz. (Men's size 10)**

**UPPER:** Conforming upper with re-enforced midfoot skin provides lockdown and containment necessary for curve and straightaway sprinting. Additional skin re-enforcement in toebox for additional foot security and durability specific to sprinting.

**MIDSOLE:** Minimal forefoot midsole and compression molded heel midsole delivers additional responsive foam where it is needed in the forefoot and less in the heel where it is not specific for acceleration and top end sprinting.

**OUTSOLE:** Cellular designed Pebax® forefoot plate with 7 aluminum spike receptacles delivers optimal traction. Midfoot and heel rubber outsole offers additional traction and durability for a variety of foot strikes.

002 Phantom/Oil-Grey

003 Black/White-Indigo Fog

101 White/Flash Crimson-Hyper Jade-Black



**NIKE HIGH JUMP ELITE**  
**806561 \$125.00**

**UNISEX SIZES:** 4-13, 14, 15, 16 **OFFER DATE:** 10/01/17-10/01/19

**UPPER:** Single layer mesh upper built on an anatomical last provides comfort and maximal containment. Single top strap for customized support.

**MIDSOLE:** Firm full length compression molded midsole foam for maximal response and full foot protection.

**OUTSOLE:** Full length Pebax® plate with 11 strategically placed aluminum receptacles for maximal traction in the heel and forefoot.

001 Phantom/Oil-Grey-Vast Grey

002 Black/Indigo Fog-Black

101 White/Flash Crimson-Black-Hyper Jade (Coming 1/1/21)



**WMNS NIKE ZOOM RIVAL S 9**  
**907565 \$65.00**

**SIZES:** 2.5-12 **OFFER DATE:** 10/01/17-10/01/19

Entry-level sprint spike designed for the high school athlete. Inspired by the Zoom Superfly. **Weight: 5.5 oz. (Women's size 8)**

**UPPER:** Lightweight mesh with no-sew synthetic leather cage and a forefoot lockdown strap delivers an exceptional fit as well as a lightweight seamless feel.

**MIDSOLE:** Thin EVA wedge provides excellent lightweight cushioning and protection.

**OUTSOLE:** Durable rubber outsole provides excellent traction with 7-removable spike pins encased in a Pebax® plate coupled with aggressive secondary elements.

101 White/Flash Crimson-Hyper Jade-Black



**WMNS NIKE ZOOM RIVAL D 10**  
**907567 \$65.00**

**SIZES:** 2.5-12 **OFFER DATE:** 10/01/17-10/01/19

Ideal for the distance runner looking for a lightweight, versatile track spike that provides an exceptional fit, responsive ride, and superior traction.

**Weight: 4.9 oz. (Women's size 8)**

**UPPER:** New integrated arch bandage wraps securely around the midfoot while a minimal mesh upper offers a lightweight and secure fit.

**MIDSOLE:** Compression-molded Phylon midsole delivers a smooth responsive ride while the medial arch provides additional support in the midfoot.

**OUTSOLE:** A Pebax® plate with six spike receptacles and 3/4-length rubber outsole offer a strategically placed yet lightweight traction.

001 Phantom/Oil-Grey



**NIKE ZOOM ROTATIONAL 6**  
**685131 \$100.00**

**UNISEX SIZES:** 6-13, 14, 15, 16 **OFFER DATE:** 10/01/17-10/01/19

Designed for the advanced shot put, discus, hammer and 35 lbs thrower looking for the most technically advanced throwing shoe.

**UPPER:** Durable mesh upper combined with a seamless vamp and a forefoot rand. Midfoot strap and an external heel counter delivers excellent lockdown.

**MIDSOLE:** Full-length thin EVA midsole provides low profile, lightweight protection.

**OUTSOLE:** Full-length BRS 1000 smooth rubber combined with a full-length Pebax plate provides excellent durability, responsive underfoot feel, and improved fit.

001 Phantom/Oil-Grey

003 Black/Indigo Fog-White

101 White/Flash Crimson-Black-Hyper Jade (Coming 1/1/21)



**NIKE ZOOM RIVAL SD 2**  
**685134 \$65.00**

**UNISEX SIZES:** 4-13, 14, 15 **OFFER DATE:** 10/01/17-10/01/19

An entry-level performance shoe for the thrower who uses rotational and/or glide techniques.

**UPPER:** Synthetic leather upper with midfoot strap for increased lockdown.

**MIDSOLE:** EVA midsole for lightweight, durable cushioning.

**OUTSOLE:** Durable BRS 1000 carbon rubber. Contoured design.

001 Phantom/Oil-Grey

003 Black/Indigo Fog-White

101 White/Flash Crimson-Hyper Jade-Black (Coming 1/1/21)



**WMNS NIKE ZOOM RIVAL M 9**  
**AH1021 \$65.00**

**UNISEX SIZES:** 5-12 **OFFER DATE:** 10/01/18-10/01/19

**UPPER:** Lightweight seamless upper offers comfort, breathability and versatile lockdown for a wide range of events. Printed top graphic provides additional support in the midfoot while maintaining comfort.

**MIDSOLE:** Minimal forefoot midsole and lightweight compression molded heel provides versatile response and heel protection suited for sprints, jumps, hurdles and middle distance.

**OUTSOLE:** Cellular designed Pebax® plate with 7 aluminum spike receptacles delivers optimal traction. Rubber outsole exclusively over the heel provides weight savings and additional traction.

100 White/Flash Crimson-Hyper Jade-Black



**WMNS NIKE ZOOM RIVAL XC 2019**  
**AJ0854 \$65.00**

**SIZES:** 2.5-12 **OFFER DATE:** 07/01/19

100 White/Black-Atmosphere Grey



**WMNS NIKE AIR ZOOM PEGASUS 37 TB**  
**CJ0506 \$120.00**

**SIZES:** 5-12  
**OFFER DATE:** 06/01/20 **001, 100**  
**OFFER DATE:** 07/01/20 **002, 003, 300, 301, 400, 401, 402, 403, 500, 600, 601, 602, 700, 701, 800, 801, 802**

The perfect running shoe with a responsive ride to go the distance.

**UPPER:** Engineered mesh provides support and breathability and provides a great fit, while dynamic Nike Flywire locks down the midfoot for support.  
**MIDSOLE:** Zoom Air in the heel and forefoot combined with cushion foam provide a firm yet cushioned and responsive ride.  
**OUTSOLE:** Lateral crash rail provides a smooth transition for all types of foot strike while horizontal lugs with perforated perimeter enhance cushioning.

**OFFER DATE: 06/01/20**

**001** Black/White-Thunder Grey

**100** White/Black-Pure Platinum

**OFFER DATE: 07/01/20**

**002** Gunsmoke/White-Black

**003** Platinum Tint/Black-Wolf Grey-Pure Platinum

**300** Gorge Green/White-Black-Pure Platinum

**301** Pro Green/White-Black-Pure Platinum

**400** College Navy/Amarillo-Pure Platinum-Amarillo

**401** College Navy/White-Black-Pure Platinum

**402** Game Royal/White-Black-Pure Platinum

**403** Univ Blue/White-Black-Pure Platinum

**500** Court Purple/White-Black-Pure Platinum

**600** Team Crimson/White-Black-Pure Platinum

**601** Team Maroon/White-Black-Pure Platinum

**602** Univ Red/White-Black-Pure Platinum

**700** Univ Gold/Black-White-Pure Platinum

**701** Vegas Gold/Black-White-Pure Platinum

**800** Brt Ceramic/White-Black-Pure Platinum

**801** Desert Orange/White-Black-Pure Platinum



**WMNS NIKE AIR ZOOM PEGASUS 36 TB**  
**BV1777 \$120.00**

**SIZES:** 5-12  
**OFFER DATE:** 06/01/19 **004, 100**  
**OFFER DATE:** 07/01/19 **002, 300, 402, 403, 500, 600, 602, 701, 800**  
**OFFER DATE:** 10/01/19 **001**

The perfect running shoe with a responsive ride to go the distance.

**UPPER:** Engineered mesh provides support and breathability and provides a great fit, while dynamic Nike Flywire locks down the midfoot for support.  
**MIDSOLE:** Zoom Air in the heel and forefoot combined with cushion foam provide a firm yet cushioned and responsive ride.  
**OUTSOLE:** Lateral crash rail provides a smooth transition for all types of foot strike while horizontal lugs with perforated perimeter enhance cushioning.

**004** Black/White-Thunder Grey

**100** White/White-Half Blue-Wolf Grey

**002** Gunsmoke/Oil Grey-White-Black

**300** Pro Green/White-Outdoor Green-Black

**402** College Navy/White-Obsidian-Black

**403** Game Royal/White-Deep Royal Blue-Black

**500** Court Purple/White-Field Purple-Black

**600** University Red/White-Chile Red-Black

**602** Team Crimson/White-Tough Red-Black

**701** University Gold/White-Amarillo-Black

**800** Team Orange/White-Brilliant Orange-Black

**001** Platinum Tint/Black-Wolf Grey-Pure Platinum





**NIKE CLUB TEAM SWOOSH ROLLER BAG 3.0 M  
BA5199 \$95.00**

**SIZES:** Misc **OFFER DATE:** 01/01/20 **END DATE:** 12/01/20

010 Black/Black/(White)



**NIKE BRASILIA LARGE DUFFEL 9.0  
BA5966 \$50.00**

**SIZES:** Misc **OFFER DATE:** 07/01/19 **END DATE:** 04/01/22

Tough 600D polyester • Durable 300D polyester • Detachable shoulder strap  
• Ventilated shoe or wet/dry storage • Secure zip pocket • Limited lifetime guarantee  
• Screened Swoosh design trademark  
**DIMENSIONS:** 28" L x 12" W x 14" H

010 Black/Black/(White)

026 Flint Grey/Black/(White)



**NIKE BRASILIA MEDIUM DUFFEL 9.0  
BA5955 \$40.00**

**SIZES:** Misc **OFFER DATE:** 07/01/19 **END DATE:** 04/01/22

Tough 600D polyester • Durable 300D polyester • Detachable shoulder strap  
• Ventilated shoe or wet/dry storage • Secure zip pocket • Limited lifetime guarantee  
• Screened Swoosh design trademark  
**DIMENSIONS:** 24" L x 11" W x 13" H

010 Black/Black/(White)

026 Flint Grey/Black/(White)

410 Midnight Navy/Black/(White)

480 Game Royal/Black/(White)

657 University Red/Black/(White)



**NIKE BRASILIA SMALL DUFFEL 9.0  
BA5957 \$35.00**

**SIZES:** Misc **OFFER DATE:** 07/01/19 **END DATE:** 04/01/22

Tough 600D polyester • Durable 300D polyester • Detachable shoulder strap  
• Ventilated shoe or wet/dry storage • Secure zip pocket • Limited lifetime guarantee  
• Screened Swoosh design trademark  
**DIMENSIONS:** 20" L x 10" W x 11" H

010 Black/Black/(White)

026 Flint Grey/Black/(White)

410 Midnight Navy/Black/(White)

480 Game Royal/Black/(White)

657 University Red/Black/(White)



**NIKE BRASILIA BACKPACK XL 9.0  
BA5959 \$50.00**

**SIZES:** Misc **OFFER DATE:** 07/01/19 **END DATE:** 04/01/22

Tough 600D polyester • Durable 300D polyester • Multiple pockets for organization  
• Water bottle pocket • Screened Swoosh branding  
**DIMENSIONS:** 19" H x 13" W x 10.5" D

010 Black/Black/(White)

026 Flint Grey/Black/(White)

410 Midnight Navy/Black/(White)

480 Game Royal/Black/(White)

657 University Red/Black/(White)



**NIKE BRASILIA MEDIUM BACKPACK 9.0  
BA5954 \$45.00**

**SIZES:** Misc **OFFER DATE:** 07/01/19 **END DATE:** 04/01/22

Durable, heavyweight 600D polyester • Large zippered main compartment  
• Medium-sized zippered compartment • Interior small-item zippered pocket  
• Separate, padded internal sleeve • Padded shoulder strap • Side mesh pockets  
• Limited lifetime guarantee • Screened Swoosh design trademark  
**DIMENSIONS:** 18" H x 12" W x 7" D

010 Black/Black/(White)

026 Flint Grey/Black/(White)

410 Midnight Navy/Black/(White)

480 Game Royal/Black/(White)

657 University Red/Black/(White)



**NIKE BRASILIA GYMSACK 9.0**  
**BA5953 \$16.00**

**SIZES:** Misc **OFFER DATE:** 07/01/19 **END DATE:** 04/01/22  
 Tough 600D polyester • Durable 300D polyester • Drawstring closure / Easy access to contents • Zippered front pocket • Screened Swoosh branding  
**DIMENSIONS:** 20" H x 15" W x 2" D

- 
- |   |                                   |
|---|-----------------------------------|
| 010 Black/Black/(White)                   | 026 Flint Grey/Flint Grey/(White) |
| 410 Midnight Navy/Black/(White)           | 480 Game Royal/Game Royal/(White) |
| 657 University Red/University Red/(White) |                                   |



**NIKE EVERYDAY PLUS CUSHION CREW 3PPK**  
**SX6888 \$18.00**

*Orders accepted in increments of 6 PPK units only*  
**SIZES:** S, M, L, XL **FABRIC:** 60% polyester/26% nylon/12% cotton/2% spandex.  
**OFFER DATE:** 01/01/19  
 Cushioned terry foot / Comfort and shock absorption • Dri-FIT fabric / Wicks away moisture to keep feet dry and cool • Arch support / Snug, secure fit • Anatomical left and right / Superior fit and cushioning  
**SIZE:** XL sock = M 12-15 shoe size; L sock = M 8-12 shoe size, W 10-13 shoe size; M sock = M 6-8 shoe size, W 6-10 shoe size.

- 
- |                   |                   |
|-------------------|-------------------|
| 010 Black/(White) | 100 White/(Black) |
|-------------------|-------------------|



**NIKE EVERYDAY PLUS CUSHION ANKLE 3PPK**  
**SX6890 \$18.00**

*Orders accepted in increments of 6 PPK units only*  
**SIZES:** S, M, L, XL **FABRIC:** 53% polyester/23% nylon/22% cotton/2% spandex.  
**OFFER DATE:** 01/01/19  
 Cushioned, medium-density padding / Impact absorption • Dri-FIT fabric / Wicks away moisture to keep feet dry and cool • Arch support / Snug, secure fit • Anatomical left and right / Superior fit and cushioning  
**SIZE:** XL sock = M 12-15 shoe size; L sock = M 8-12 shoe size, W 10-13 shoe size; M sock = M 6-8 shoe size, W 6-10 shoe size.

- 
- |                   |                   |
|-------------------|-------------------|
| 010 Black/(White) | 100 White/(Black) |
|-------------------|-------------------|



**NIKE EVERYDAY PLUS CUSHION LOW 3PPK**  
**SX7040 \$18.00**

*Orders accepted in increments of 6 PPK units only*  
**SIZES:** S, M, L, XL **FABRIC:** 60% polyester/26% nylon/12% cotton/2% spandex.  
**OFFER DATE:** 01/01/19  
 Cushioned terry foot / Comfort and shock absorption • Dri-FIT fabric / Wicks away moisture to keep feet dry and cool • Arch support / Snug, secure fit • Anatomical left and right / Superior fit and cushioning  
**SIZE:** XL sock = M 12-15 shoe size; L sock = M 8-12 shoe size, W 10-13 shoe size; M sock = M 6-8 shoe size, W 6-10 shoe size.

- 
- |                   |                   |
|-------------------|-------------------|
| 010 Black/(White) | 100 White/(Black) |
|-------------------|-------------------|



**NIKE EVERYDAY PLUS CUSHION NO SHOW 3PPK**  
**SX6889 \$18.00**

*Orders accepted in increments of 6 PPK units only*  
**SIZES:** S, M, L, XL **FABRIC:** 53% polyester/23% nylon/22% cotton/2% spandex.  
**OFFER DATE:** 01/01/19  
 Cushioned, medium-density padding / Impact absorption • Dri-FIT fabric / Wicks away moisture to keep feet dry and cool • Arch support / Snug, secure fit • Anatomical left and right / Superior fit and cushioning  
**SIZE:** XL sock = M 12-15 shoe size; L sock = M 8-12 shoe size, W 10-13 shoe size; M sock = M 6-8 shoe size, W 6-10 shoe size.

- 
- |                   |                   |
|-------------------|-------------------|
| 010 Black/(White) | 100 White/(Black) |
|-------------------|-------------------|



# CUSTOMIZE IT

COMPLETE EMBELLISHMENT AND PRICING OPTIONS FOR ALL DIGITAL AND CUSTOM STYLES CAN BE FOUND AT [NIKETEAM.COM](http://NIKETEAM.COM)

## COLOR OPTIONS: COLOR AVAILABILITY WILL VARY BY STYLE.



## LETTERING OPTIONS: HEIGHT WILL VARY BASED ON TEAM NAME.

**NEW** VAPOR STRIKE - 1 or 2 color

ABCDEFGHIJKLMNOPQRSTUVWXYZ

**NEW** VAPOR STRIKE ITALIC - 1 or 2 color

ABCDEFGHIJKLMNOPQRSTUVWXYZ

ORANGE - 1 or 2 color

ABCDEFGHIJKLMNOPQRSTUVWXYZ

ALL LEAGUE - 1 or 2 color - (Also available in Condensed version)

ABCDEFGHIJKLMNOPQRSTUVWXYZ

NIKE UNCONTESTED - 1 or 2 color

ABCDEFGHIJKLMNOPQRSTUVWXYZ

FULL BLOCK - 1 or 2 color - (Also available in Condensed version)

ABCDEFGHIJKLMNOPQRSTUVWXYZ

BUREAU - 1 or 2 color

ABCDEFGHIJKLMNOPQRSTUVWXYZ

BOULDER - 1 or 2 color

ABCDEFGHIJKLMNOPQRSTUVWXYZ

MICHIGAN STATE - 1 or 2 color

ABCDEFGHIJKLMNOPQRSTUVWXYZ

TUSCON - 1 or 2 color - (Also available in Condensed version)

ABCDEFGHIJKLMNOPQRSTUVWXYZ

**UPDATED** SCRIPT - 1 or 2 color

ABCDEFGHIJKLMNOPQRSTUVWXYZ

**UPDATED** SCRIPT LOWER CASE - 1 or 2 color

abcdefghijklmnopqrstuvwxyz

## NUMBERING OPTIONS: HEIGHT WILL VARY BY STYLE.

**NEW** VAPOR STRIKE - 1 or 2 color

1234567890

**NEW** VAPOR STRIKE ITALIC - 1 or 2 color

1234567890

FULL BLOCK - 1 or 2 color - (Also available in Condensed version)

1234567890

ALL LEAGUE - 1 or 2 color - (Also available in Bold and Condensed version)

1234567890

ALL LEAGUE SHADOW - 2 color

1234567890

ALL LEAGUE - 3 color

1234567890

NIKE UNCONTESTED - 1 or 2 color

1234567890

BUREAU - 1 or 2 color

1234567890

ORANGE - 1 or 2 color

1234567890

BOULDER - 3 color only

1234567890

MICHIGAN STATE - 1 or 2 color

1234567890

TUSCON - 1 or 2 color - (Also available in Condensed version)

1234567890

**POST EMBELLISHMENT IS NOT RECOMMENDED WITH DIGITALLY PRINTED STYLES.**

# NIKE TEAM SPORTS – COLOR MATCHING CHART:

Many Nike Team colors have more than one name for the same color. This chart shows colors of the *same value with different names*.

TEAM WHITE	TEAM BLUE GREY	WOLF GREY	TEAM PEWTER	COOL GREY	DK STEEL GREY	FLINT GREY	DK GREY HEATHER	NATURAL
TEAM BLACK								
BIRCH	TEAM VEGAS GOLD TEAM GOLD	JERSEY GOLD	CHINO	MEDIUM OLIVE	TEAM ANTHRACITE	ANTHRACITE	TEAM BROWN	DK CINDER
VOLT	ACTION GREEN	LT GREEN SPARK	PINE GREEN	TEAM KELLY GREEN APPLE GREEN	TEAM DK GREEN GORGE GREEN	NOBLE GREEN	OBSIDIAN	TEAM NAVY COLLEGE NAVY
TEAM LT BLUE	VALOR BLUE	PHOTO BLUE	TEAM ROYAL BLUE	GAME ROYAL	TIDAL BLUE	AERO BLUE	BLUSTERY	MARINA
TEAM PURPLE	NEW ORCHID	PINKFIRE	VIVID PINK	BRIGHT CRIMSON	TEAM SCARLET UNIVERSITY RED	TEAM CRIMSON	GYM RED	TEAM RED
TEAM CARDINAL TEAM MAROON	TEAM DK MAROON DEEP MAROON	YELLOW STRIKE	TOUR YELLOW	DESERT ORANGE	TEAM BRIGHT GOLD SUNDOWN UNIVERSITY GOLD	BRIGHT CERAMIC	TEAM ORANGE	



[NIKETEAM.COM](https://www.niketeam.com)

